

# PHASE TWO

COP 2937 Database Concepts

Lydon, Matthew

Country Doctor's  
Database Project

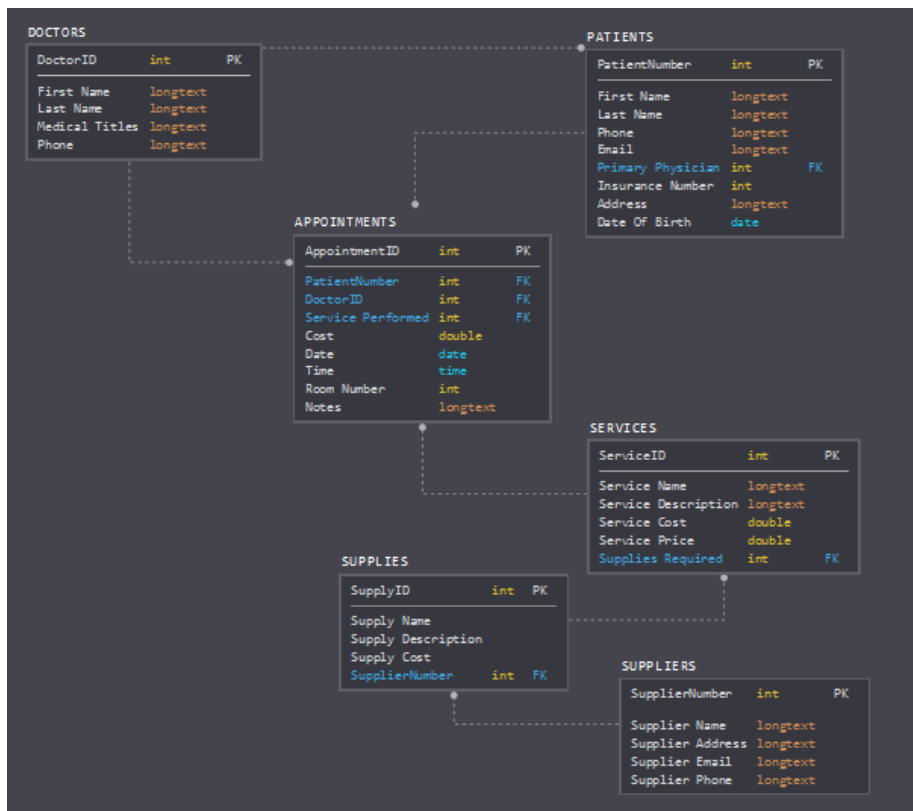
## Tables and Keys

Below is each table. Primary / Surrogate keys are identified in bold and Foreign keys are identified in italics.

Doctors	Patients	Appointments	Services	Supplies	Suppliers
<ul style="list-style-type: none"> <li>• <b>DoctorID</b></li> <li>• First Name</li> <li>• Last Name</li> <li>• Medical Titles</li> <li>• Phone</li> </ul>	<ul style="list-style-type: none"> <li>• <b>PatientNumber</b></li> <li>• First Name</li> <li>• Last Name</li> <li>• Phone</li> <li>• Email</li> <li>• Insurance Number</li> <li>• Date Of Birth</li> <li>• Address</li> <li>• <i>Primary Physician</i></li> </ul>	<ul style="list-style-type: none"> <li>• <b>AppointmentID</b></li> <li>• <i>PatientNumber</i></li> <li>• <i>DoctorID</i></li> <li>• Cost</li> <li>• Date</li> <li>• Time</li> <li>• Room Number</li> <li>• Notes</li> </ul>	<ul style="list-style-type: none"> <li>• <b>ServiceID</b></li> <li>• Service Name</li> <li>• Service Description</li> <li>• <i>SupplyID</i></li> <li>• Service Cost</li> <li>• Service Price</li> </ul>	<ul style="list-style-type: none"> <li>• <b>SupplyID</b></li> <li>• Supply Name</li> <li>• Supply Description</li> <li>• Supply Cost</li> <li>• <i>SupplierNumber</i></li> </ul>	<ul style="list-style-type: none"> <li>• <b>SupplierNumber</b></li> <li>• Supplier Name</li> <li>• Supplier Address</li> <li>• Supplier Email</li> <li>• Supplier Phone</li> </ul>

## Datatypes

Below is an ERD which contains Primary / Surrogate keys for each Table, Foreign keys for relationships between tables, and datatypes. Final relationship table below on page two.



## Table Relationships in Access

Below is a screenshot of the Table Relationships for the Database when entered in Microsoft Access.

